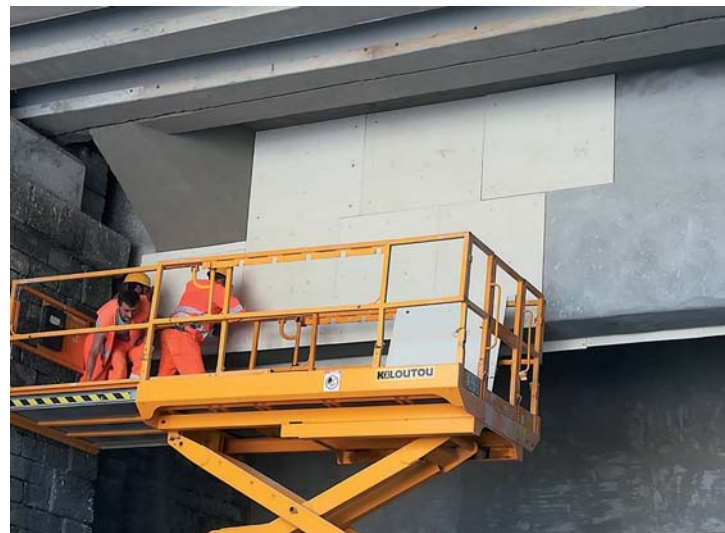
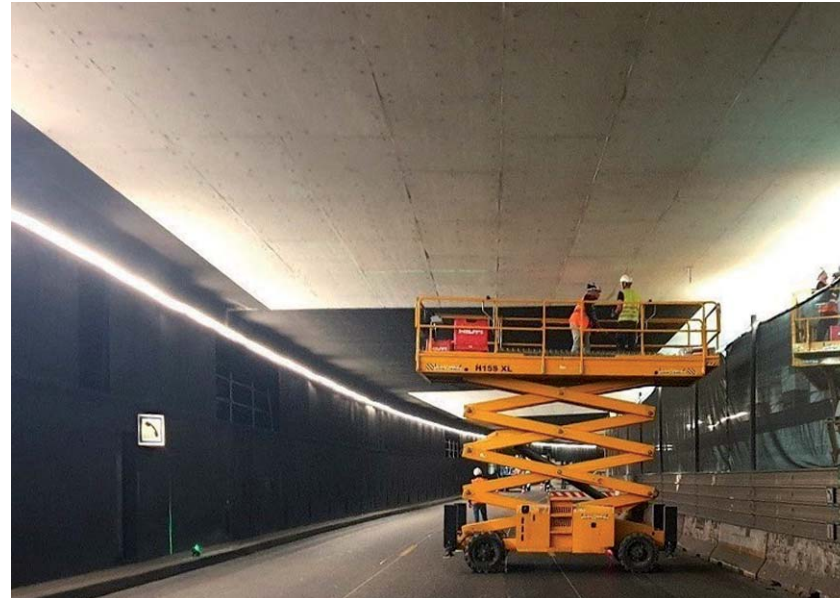


## FIRE PROTECTION OF THE STRUCTURES WITH PANELS



CorteAperta offers complete engineering service, Products and systems for Fire Protection in tunnels, installation and final certification.



Corteaperta offers solutions to projects with different materials and systems to guarantee:

- Longevity and durability of the structures
- Performances and certifications
- Speed of implementation
- Management flexibility
- Compliance with work schedules
- High quality work

**100% satisfied customers**

## Latest Jobs in France

- Tunnel de Talant (Dijon) 2014
- Tunnel Descendant Ouest di Monaco "ALBERT II" 2016
- Grand Tunnel du Chambon - 2017
- Tunnel du Chat - France (Savoie) 2017
- Tunnel de la Gatine – Angoulême 2019
- Tunnel de Janot – La Ciotat 2019
- Tunnel du Mont Blanc – 2021
- Tunnel Butte Mortemart & Lac Superieur 2021-2022
- Tunnel de la Mescla et du Reveston 2023



Tunnel du Chat redevelopment - 2017

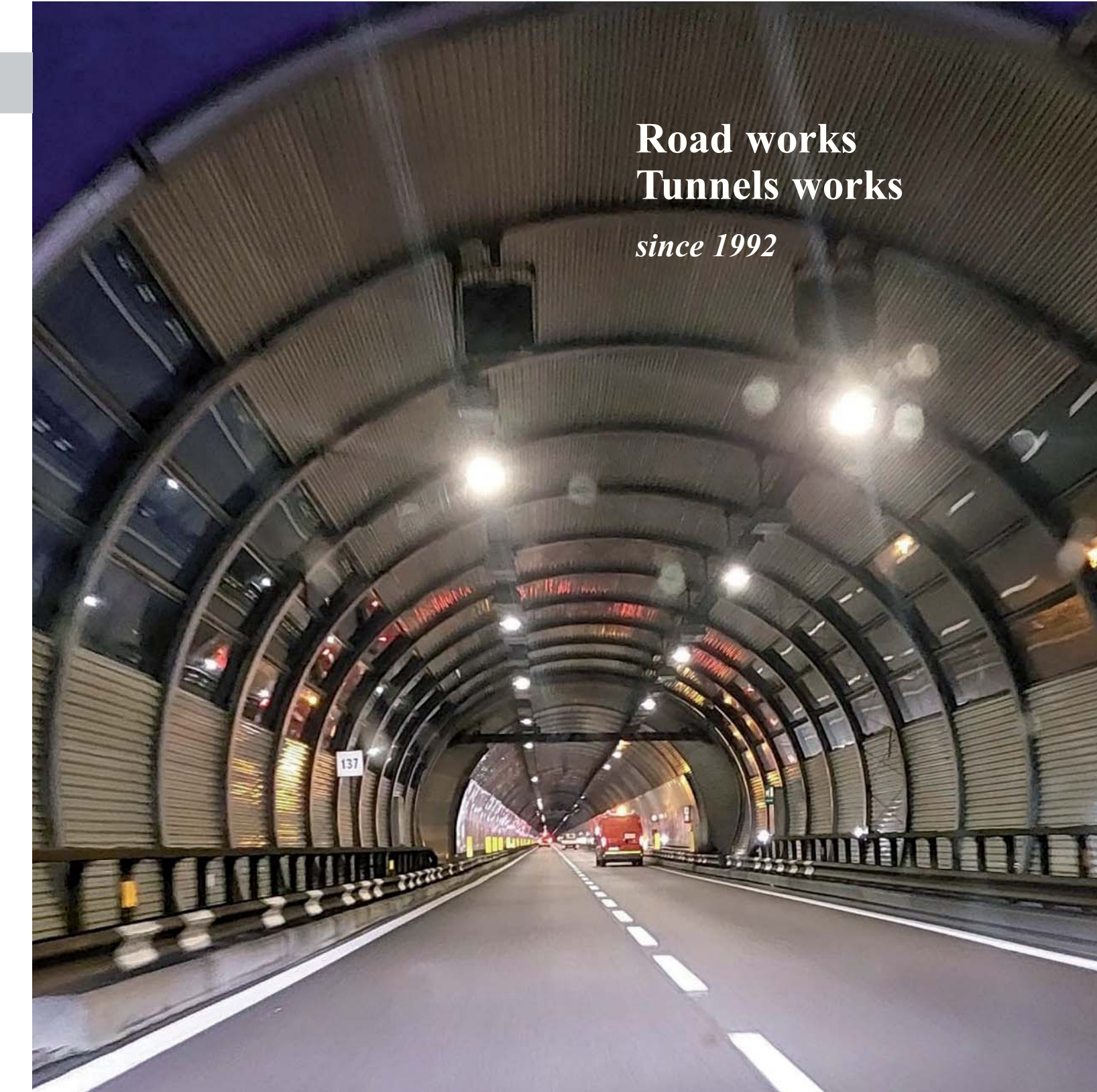


Tunnel de Janot – La Ciotat (F) 2019



Via Thomas Alva Edison, 29/31  
25050 Provaglio d'Iseo (BS) ITALY  
CF/PI 02535400986  
Tel. +39 0309823032  
Fax +39 0309881117  
www.corteaperta.com

- Contacts 0039 342 3321773
- cantieri@corteaperta.it
- Bazzana 0039 348 4121486
- r.bazzana@corteaperta.it
- tecnico@corteaperta.it



Road works  
Tunnels works  
since 1992

*Your advantage: a unique partner*

# Corte Aperta srl

## A UNIQUE PARTNER FOR TUNNEL WORKS

From 1992, CorteAperta srl is a leader in the market of works: road, railroads and underground. With over 25 years of experience in Europe the company specializes in the following activities:

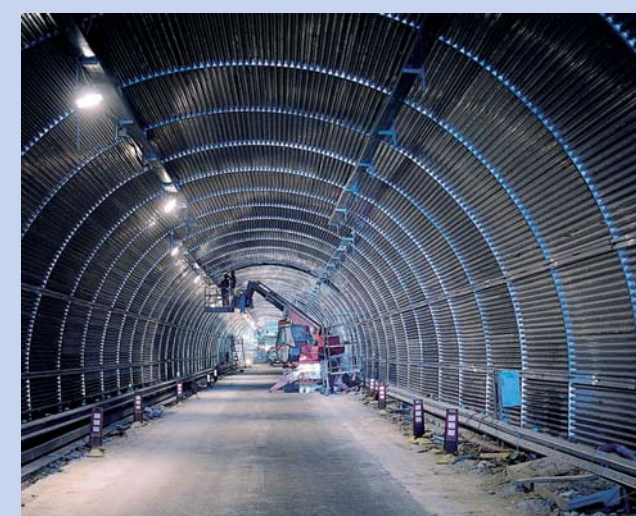
- Tunnel Fire protection
- Walls Finishing Cladding
- Railway Stations and Metro Stations
- Water collection and waterproofing
- Specials Concrete: prefabricated elements for tunnel
- Safety renovation and walls painting
- Acoustic protections

In collaboration with leading European manufacturers of certified tunnel products and engineering firms of international relevance, CorteAperta srl offers a complete and integrated service, with innovative solutions designed for specific projects, allowing you to optimize project costs and achieve outstanding results.

- Design, verification of the fire resistance, passive fire protection systems for tunnels, in accordance with the intentional standards .
- Specific products for fire protection.
- Innovative systems for refurbishing and upgrading the tunnels with cladding panels.
- Concrete prefabricated elements for tunnel
- Installation and commissioning on site
- Certification of systems implemented

### A SINGLE PARTNER FOR YOUR WORKS:

- Roads and Highways
- Road and rail tunnels
- Subway stations and railway stations
- Edifici commerciali e pubblici
- Commercial and public buildings
- Hotels and Sports Stadiums
- Airports



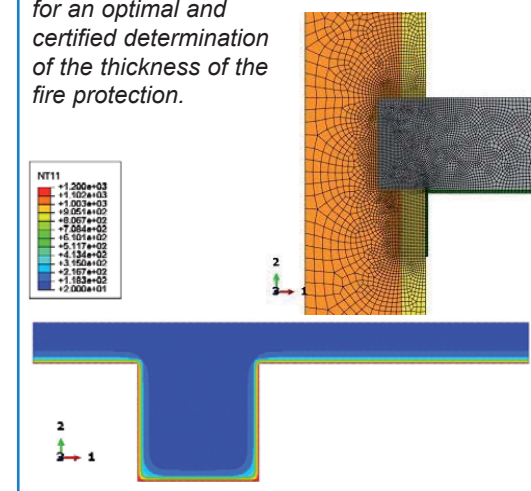
## FIRE PROTECTION IN TUNNELS WITH PLASTER AND MORTARS

Premixed plasters applied by spray  
Fireproof and fire-resistant mortars  
Precast concrete cladding with fire resistance.  
Certified products and systems for Tunnel applications  
International application references for more than 20 years

### Applications:

- Road tunnels
- Railway tunnels
- Metro and Railway Stations

*Finite Element Analysis, for an optimal and certified determination of the thickness of the fire protection.*



Securing tunnels with railway lines in service. (ITALFERR- RFI)



## Corte Aperta srl

### CORTEAPERTA SERVICES:

- Project feasibility study.
- Engineering Solutions
- 2D and 3D Finite Element Analysis Modelling
- Material Selection
- Supply of Fire Protection products
- Installation
- Final Certification

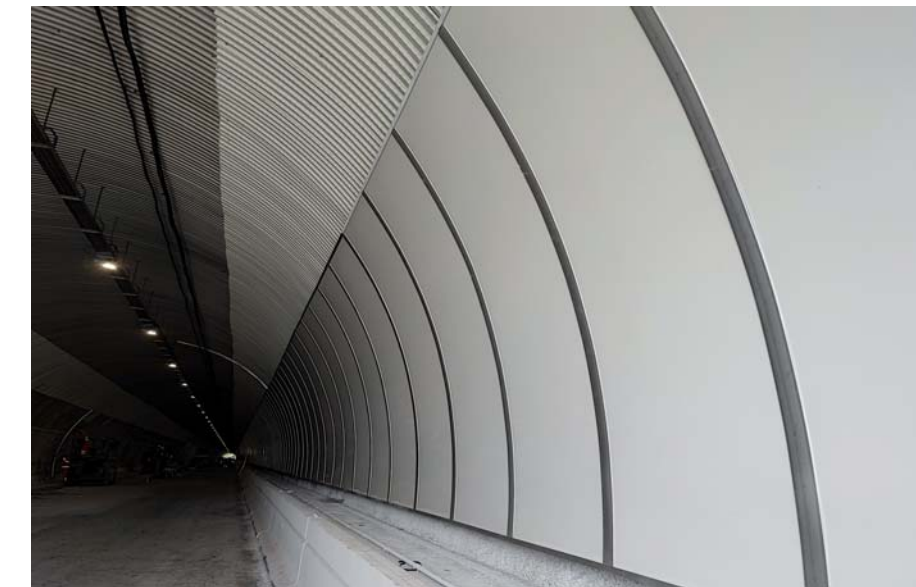
## FINISHING CLADDINGS IN TUNNELS METRO AND RAILWAY STATIONS WATERPROOFING LININGS

25 years of underground work's experience.

**Solutions with finishing metallic panels:**  
Pre-painted steel  
Stainless steel  
Aluminum

### International references in Europe and Latin America:

- Italy
- France
- Spain
- Portugal
- Principality of Monaco
- Switzerland
- England
- Belgium
- Chile
- Brazil



**500.000 m<sup>2</sup> Metallic panels and lighting finishes.**  
**600.000 m<sup>2</sup> Watertight panels for water catchments in tunnel.**

